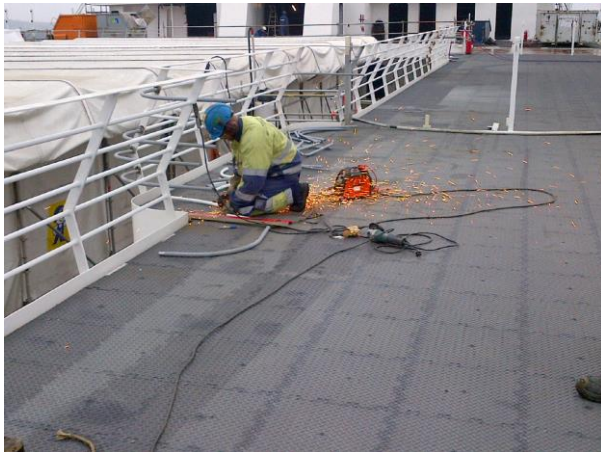


INTERLOCKING RHINO FR TILES™

Protec Marine developed interlocking flame retardant Rhino tiles for protection of exterior and interior decks, roofs, floors and other horizontal surfaces. This product came on the market as an alternative to 6mm fine fluted rubber matting and FR Plywood 8 X 4 sheets, and is offered exclusively to the worldwide marine and construction markets by Protec Marine and their strategic partners. It is setting a new standard in deck/floor protection with yard after yard and site after site converting to Rhino Tiles instead of Plywood and rubber matting.



Rhino Tiles are quicker, easier and more efficient to install than other products, do not warp when wet, can be re-used and is resistant to extreme temperatures. Rhino Tiles are made out of 100% recycled PVC which makes it much more environmentally friendly than rubber or plywood products. Most importantly it is inherently flame retardant and therefore resistant to grinding and welding sparks. Rhino Tiles are also non toxic and do not pose any risks to health and safety when being cut or installed through dust or fumes produced.



Features and Benefits

- Manufactured in an ISO9001 accredited plant in the UK
- Flame retardant to European Standard: EN13501 (Euroclass) B_{FL} S1
- Flame Retardant to USA and Canadian Standard: ASTM E 648 Critical Radiant Flux: Class 1
- Antislip to EN13036-4 2003 (Dry: 100 PTV and Wet: 50 PTV)
- Defence Standard 02-713: Toxicity Index 4.7
- Quick and simple to install
- Light weight while offering high impact resistance
- Does not warp when wet and exposed to the weather
- UV Stable
- Good anti-fatigue properties
- Resistant to most solvents and chemicals
- Easy to cut
- Follows contours of decks. (not too rigid)
- Made out of 100% post consumer waste recycled PVC Granules (environmentally friendly)
- Can be recycled
- Cost-effective
- Available in any colour (Virgin grades only – which are more expensive)
- Does not smell
- Does not contract and expand with temperature changes
- Can be re-used
- Extremely hard wearing and durable
- Reduces damage caused by impact, abrasion & vibration
- Easy to clean & maintain
- Good thermal and acoustic insulation
- Smart modern checker plate design
- Unique puzzle join, which can be parallel or brick effect and combined with yellow bevelled edges for higher visibility.



Technical Data 100% Recycled Version

MATERIAL:	Poly Vinyl Chloride (PVC)
DESCRIPTION:	Flexible PVC fraction from electric cable recycling
FORMAT:	Granulated (1 - 5 mm)
COLOR:	Mix (Black)
APPLICATIONS:	Extrusion, Injection, Other
SIZE OF TILES:	500mm x 500mm x 14mm

PRODUCT COMPOSITION:

Material Amount	(%)
Elastomers (Rubber)	3.02
Aluminium	0.28
Copper	0.09
PVC	95.02
Polyethylene	1.32
Other Polymers (PA, PC, PS)	0.27
<hr/>	
Total:	100



Top



Bottom